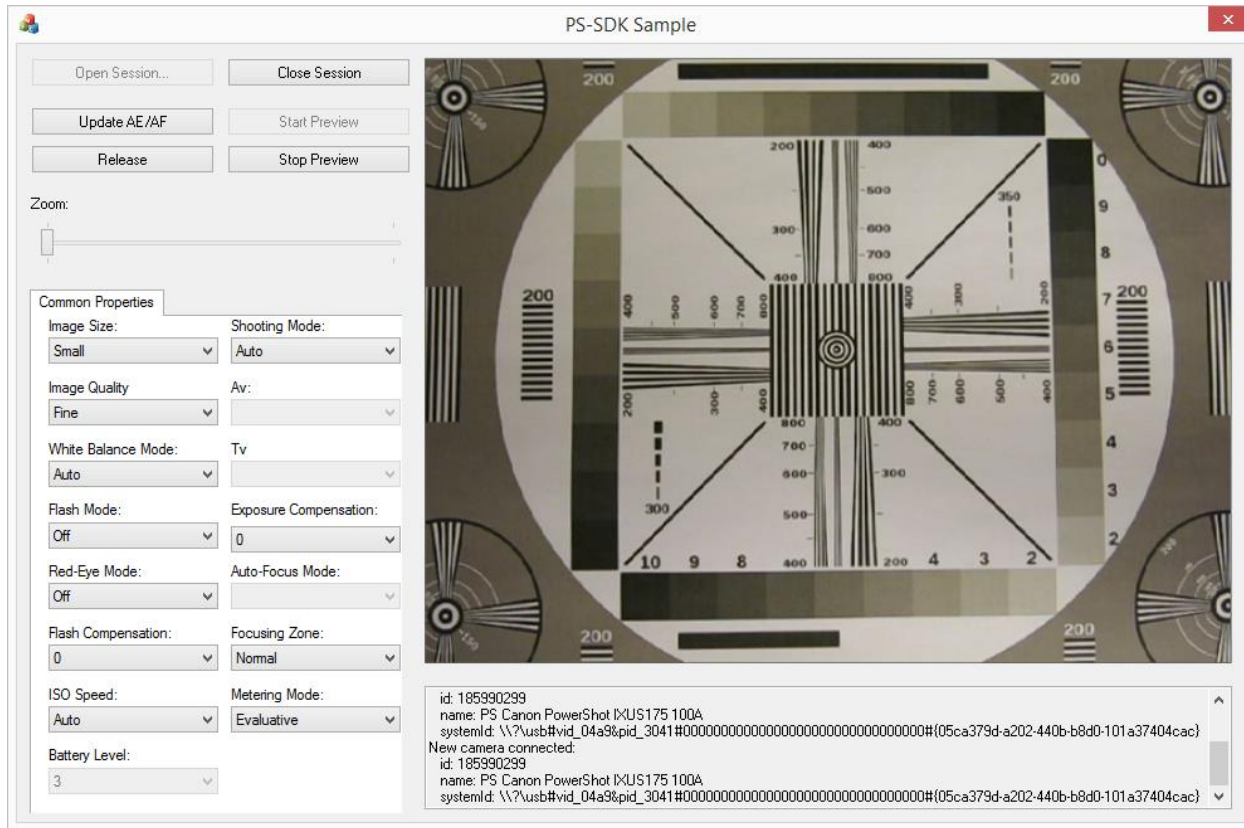
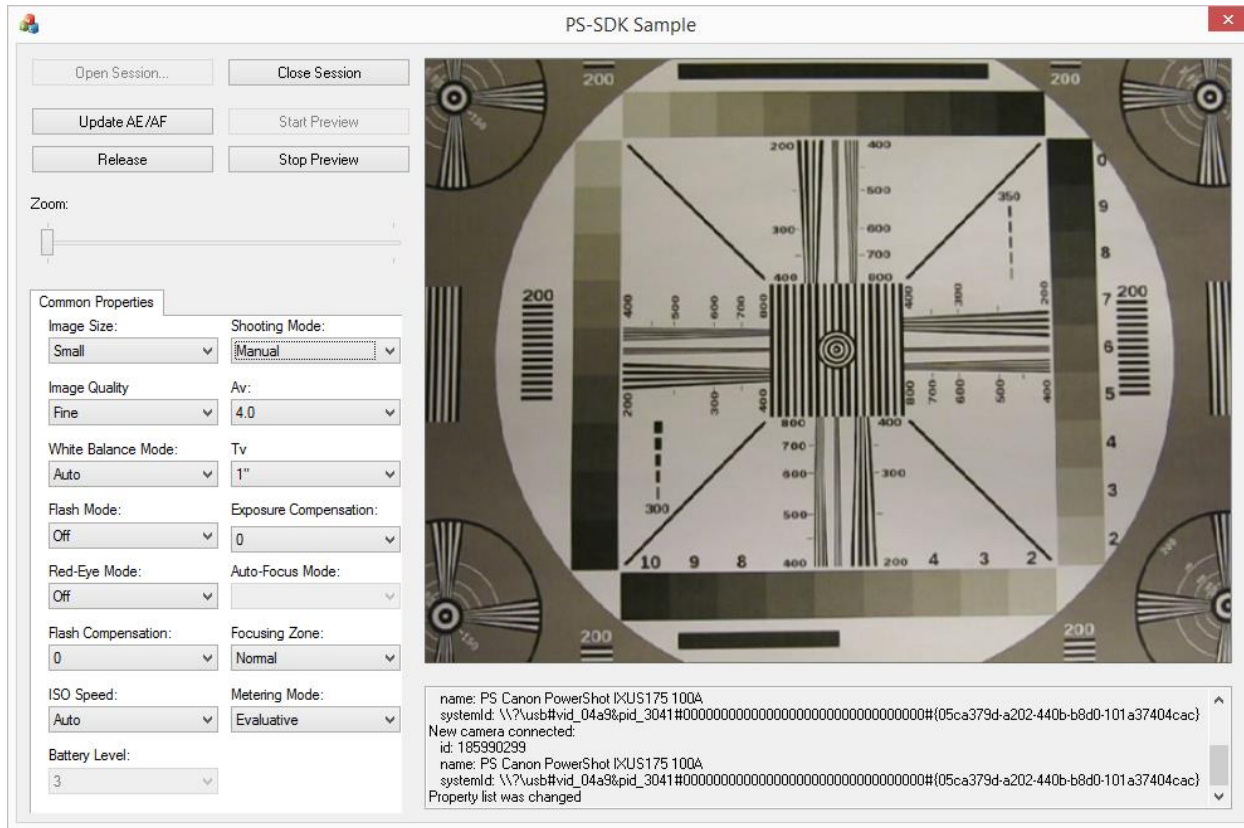


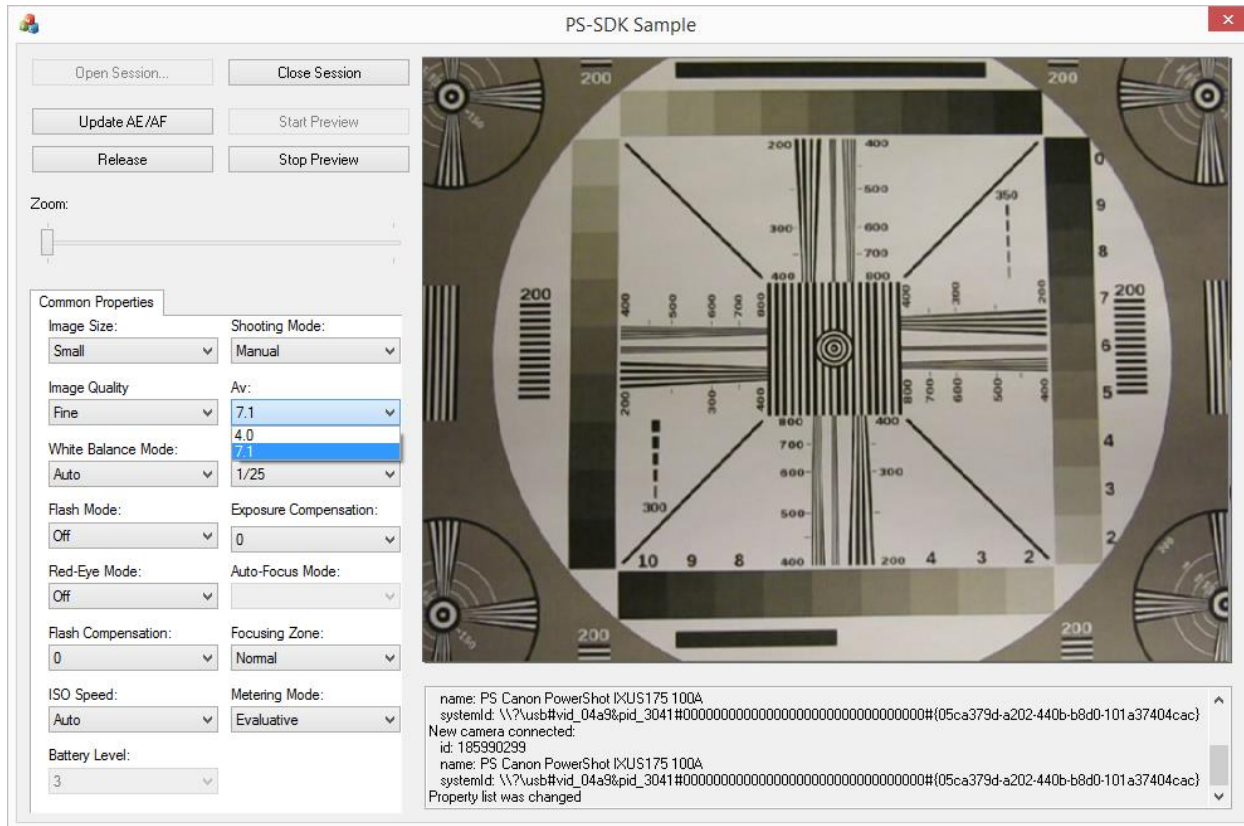
2. Start preview to check live view image from camera



3. Choose appropriate Shooting mode: Manual, Av priority, Tv priority



4. Choose Av or/and Tv value. Please, notice that IXUS series cameras do not have physical aperture and ND-filter used instead of it. So for IXUS series cameras only minimal and maximum Av values available.



5. Choose Av or/and Tv value

PS-SDK Sample

Open Session... Close Session

Update AE/AF Start Preview

Release Stop Preview

Zoom:

Common Properties

Image Size: Small Shooting Mode: Manual

Image Quality: Fine Av: 7.1

White Balance Mode: Auto Tv: 1/25

Flash Mode: Off

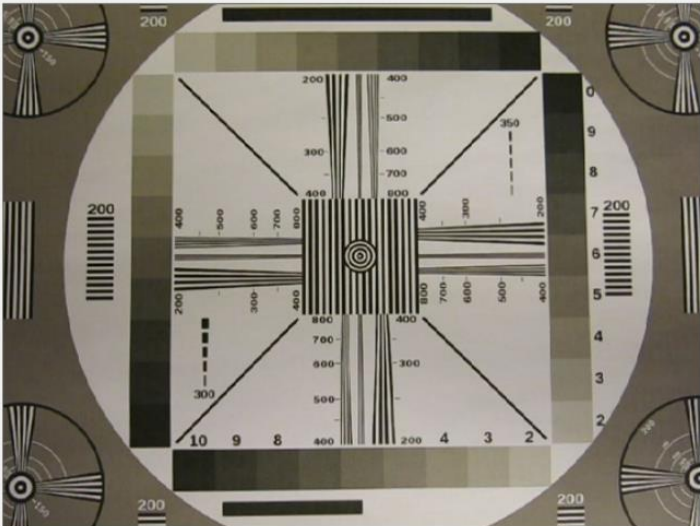
Red-Eye Mode: Off

Flash Compensation: 0

ISO Speed: Auto

Battery Level: 3

1/30
1/40
1/50
1/60
1/80
1/100
1/125
1/160
1/200
1/250
1/320
1/400
1/500
1/640
1/800
1/1000
1/1250
1/1600
1/2000



name: PS Canon PowerShot D1US175 100A
systemId: \\?usb#vid_04a9#pid_3041#00000000000000000000000000000000#(05ca379d-a202-440b-b8d0-101a37404cac)
New camera connected:
id: 16590299
name: PS Canon PowerShot D1US175 100A
systemId: \\?usb#vid_04a9#pid_3041#00000000000000000000000000000000#(05ca379d-a202-440b-b8d0-101a37404cac)
Property list was changed