

inPhoto CS: Connection SONY Cameras With WiFi

The following steps are performed on the camera. The camera should not be connected to USB. The camera must be charged.

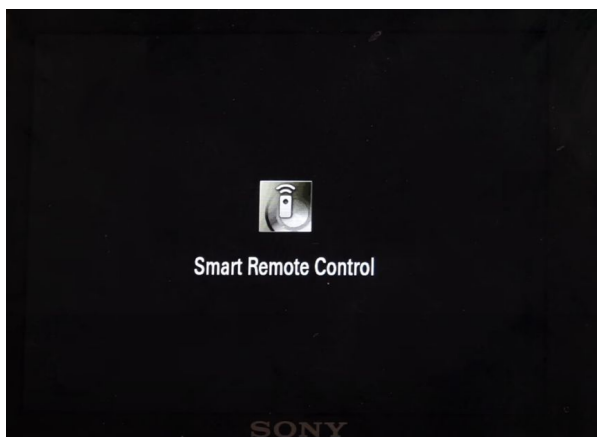
1. Turn on the SONY camera, press the Menu button on camera body.
2. In the camera menu, go to the Application list item and click it.



3. In the application list, select Smart Remote Control.



4. Smart Remote Control starts, please wait.



5. Smart Remote Control creates a WiFi network, please wait.



6. Smart Remote Control displays network settings for mobile devices (QR -code)



7. Press the Delete image button on the camera;



9. You will see the text parameters of the network, including the password. Leave camera in this state for further actions.

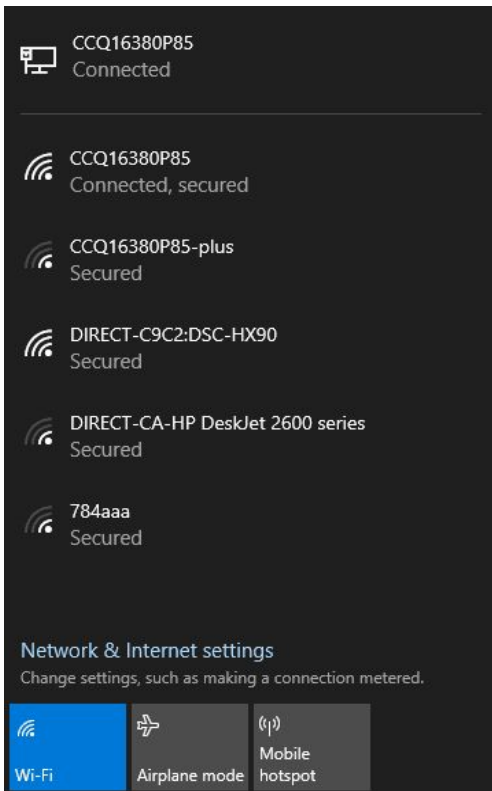


The following actions are performed on the computer. You must have a separate WiFi adapter for connecting the camera, adapter must not be used for Internet connection. You can have another separate wire or wireless adapter for Internet connection at the same time. Adapter must be on, Windows WiFi mode must be on.

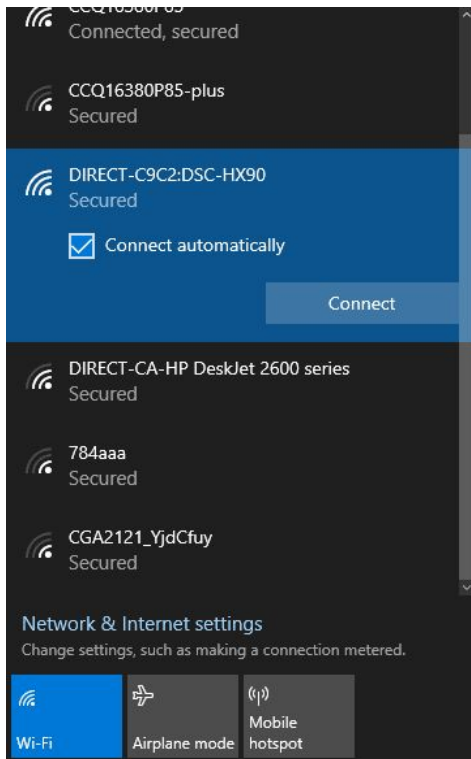
10. Click the Network icon on the Windows taskbar.



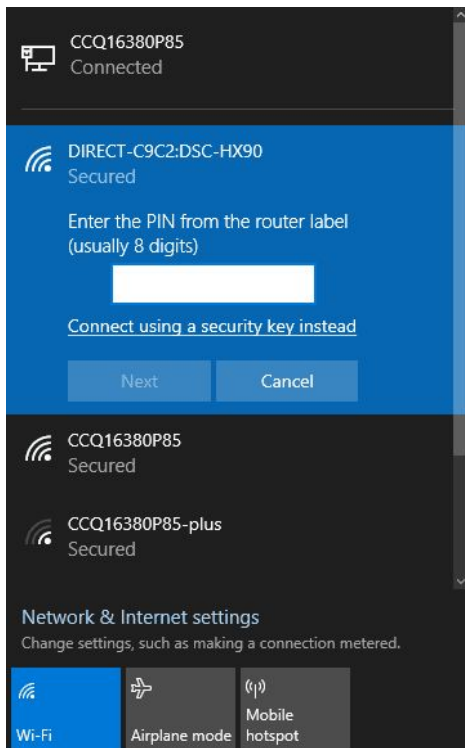
11. Find the name of the network that the camera created and that is shown on camera display (usually starts with DIRECT-...).



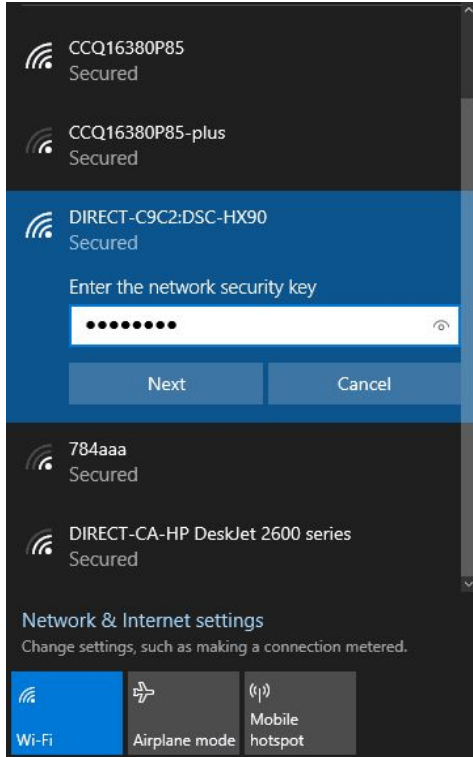
13. Select this network, leave the flag “Connect automatically” checked if you want to automatically connect to the camera’s network in the future. Click Connect.



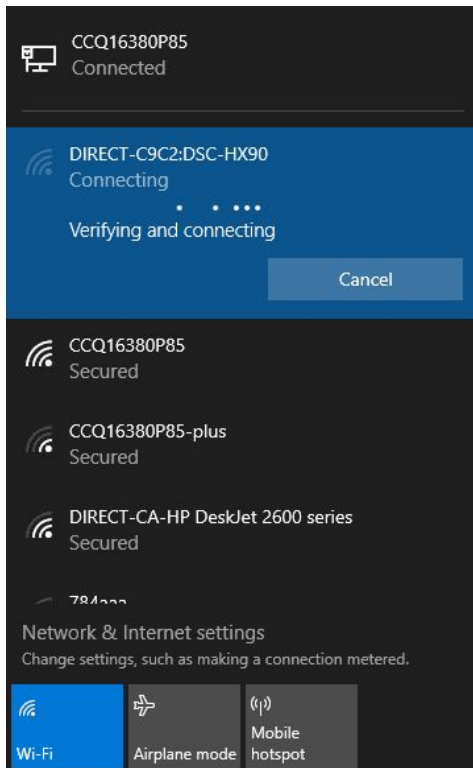
14. If you were prompted to enter a PIN, then click “Connect using a security key instead” (this step depends on the version of your Windows and system settings).



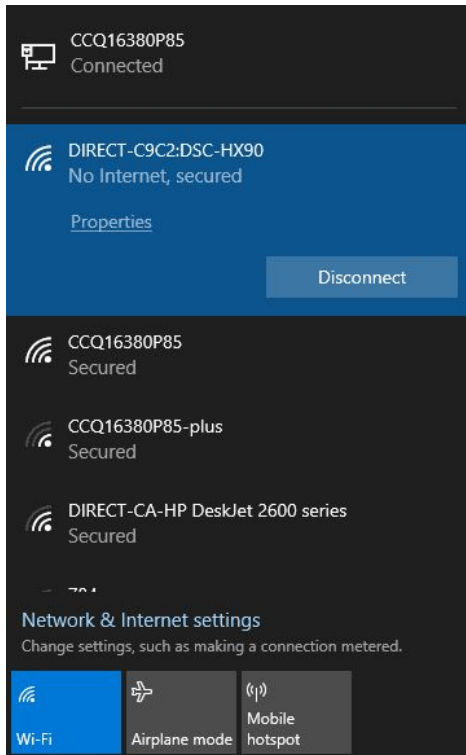
15. Enter the password that is displayed on the camera's screen.



16. Connecting, wait.



17. The adapter is connected to the camera. Please notice - if no connection occurred within 2 minutes, please proceed to the next step. In some cases, a successful connection message is delayed for several minutes.

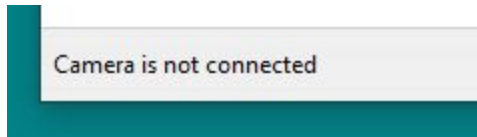


The following steps are performed in the inPhoto program:

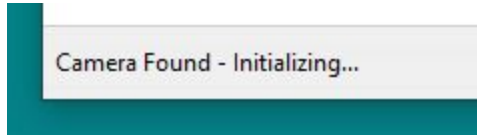
1. Launch inPhoto application



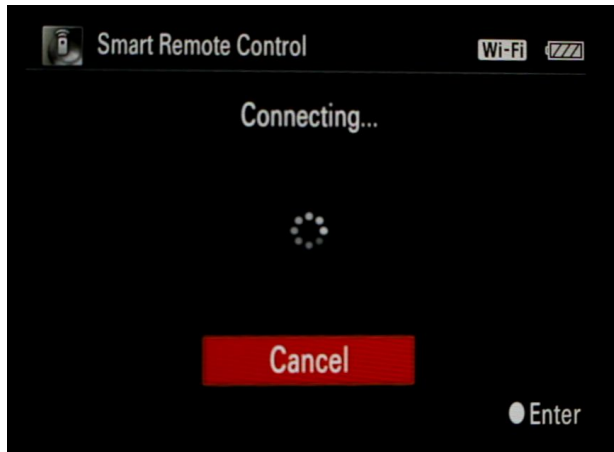
3. The message Camera not connected appears in the status line of the inPhoto window. Wait a few seconds, the application needs to determine the network and find the camera on the network.



4. After connecting, the status line will first display "Camera Found - Initializing", please wait



5. On the same time Camera screen show "Connecting", please wait



6. Finally message "Connected to" with the model of the connected camera appear. inPhoto and camera are ready for remote control and shooting:

